

Your Actions Can Stop a Thief

Make Sure You:

Take extra precautions when you are on vacation.

- Make your home look like someone is at home.
- Have a friend or neighbor pick up mail and newspapers daily and put out garbage on trash day.
- Put lights on timers.

Put away machinery, ladders and tools.

- Do not leave any items where they could be stolen.
- Or used to gain entry to your home.

Do not automatically open the door when someone knocks.

- Use your peephole
- Ask to see identification before you open your door.



There is a lot you can do to
protect your home from crime -
And give yourself some peace of
mind.



BOWIE POLICE DEPARTMENT

15901 Excalibur Road
Bowie, MD 20716

Administrative Office #: 301-575-2480

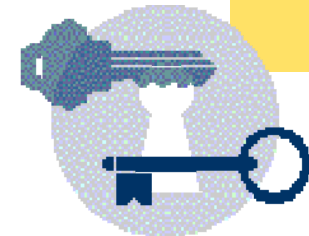
Emergency #: 911

Non-Emergency # : 301-352-1200

Fax #: 301-575-2479

BOWIE POLICE DEPARTMENT

CLOSING THE DOOR ON CRIME



Stop intruders before they get started.

Take steps to protect your home.

YOUR HOME IS YOUR CASTLE

Don't let it be a target for criminals!

Most intruders seek easy targets.

- They want to get in quickly, quietly and unseen.
- The harder you make it for them, the lower your risk of a break-in.

Effective home security doesn't have to be costly

- Common sense and a bit of time and energy go a long way



Don't give criminals a "window of opportunity"

Home security starts at the door and windows.

Always keep your doors locked — even when you are at home

Install sturdy doors, door frames and hardware.

- Solid wood or steel-reinforced doors offer more protection than hollow-core wooden doors.

Use deadbolt locks

- They can not be "popped" like spring-latch locks can.
- Chain locks offer little protection and give a false sense of security.

Install a peep hole.

- Always know who is on the other side of your door before you open it. Do not rely on a chain.

Secure sliding glass doors.

- Place a broomstick or steel rod in the track or drill a hole through the upper part of the slider and track and insert an easily removable nail, bolt or screw

Install key locks

- On window sashes. Ensure that standard window locks close properly and are firmly attached.

Consider window pegs.

- Drill a hole at a downward angle where the sashes overlap and insert an easily removable nail or peg.

Install metal grates or grilles

- On cellar and ground-level windows. Ensure they have inside release levers.

Secure air conditioners

- To the window with brackets and screws.
- Lock the window in place.

Use lighting and landscaping

Position outdoor lighting carefully.

- Place lights out of reach so bulbs can not be easily broken.
- Aim lights at garage doors, entryways and ground-level windows.

Consider different types of lights.

- Motion sensor floodlights turn on when movement is detected.
- Photoelectric lights automatically turn on at dusk and off at dawn.

Keep plants trimmed

- Overgrown bushes can cover windows and doorways giving burglars a hiding place.
- Prune trees with limbs that could provide easy access to upper floors.

Consider an alarm system.

Shop around and ask for an explanation regarding:

- What parts of the property are monitored?
- Is the system connected to a local law-enforcement agency or a monitoring company.
- Does it have a backup power source.
- Talk to other customers about their systems and experience with the company.