



# COVID-19 UPDATE

**Monday, December 28, 2020**

Here's what you will find in today's update:

## COVID-19 Information

- [COVID Data Trends](#)
- [Metrics Charts](#)
- [Prince George's County Metrics](#)
- [Maryland hospitalizations](#)
- [Nationwide Trends](#)
- [Vaccine Distribution](#)
- [Maryland Vaccine Priority Groups](#)
- [What to Expect After Vaccination](#)
- [Realtime Capacity Info for Metrobus and Metrorail](#)

## Other News

- Upcoming Meetings & Events
- Electronics Recycling Event
- Dr. Martin Luther King, Jr. Art Contest

## COVID Data Trends

Now roughly one year since the first COVID-19 were reported internationally, jurisdictions in the United States have reported that more than 1 million people have received their first dose of the COVID-19 vaccine. As of this morning, Maryland has reported 20,812 total COVID-19 vaccinations have been administered as part of Vaccination Phase 1A. These milestones come as key metrics in the state remained stable over the holiday weekend, with some small, but promising decreases in hospitalizations. Key metrics in Prince George's County remain higher than overall state levels, although positivity rate and case rate per 100k have decreased over the last few weeks. Bowie's cases numbers similarly have shown promising decreases over the last few weeks as well. The effects of holiday gatherings and travel on COVID data is still yet to be seen.

## Key Metrics Charts

These charts provide data for the last seven days on key COVID-19 metrics that are being tracked and analyzed to identify trends and to make reopening decisions.

COVID-19 New Case Tracking							
	20715	20716	20720	20721	Bowie Cases	Prince George's Cases	Maryland Cases
<b>Today</b>	<b>961 (+4)</b>	<b>921 (+3)</b>	<b>1,051 (+7)</b>	<b>1,366 (+15)</b>	<b>4,299 (+29)</b>	<b>53,338 (+295)</b>	<b>269,183 (+1,985)</b>
27-Dec	+9	+6	+6	+6	+27	+276	+1,758
26-Dec	+3	+11	+16	+19	+49	+404	+2,280
25-Dec	+9	+13	+20	+10	+52	+451	+2,432
24-Dec	+14	+10	+10	+13	+47	+450	+2,866
23-Dec	+7	+7	+14	+9	+37	+456	+2,465
<b>22-Dec</b>	<b>915</b>	<b>871</b>	<b>978</b>	<b>1,294</b>	<b>4,058</b>	<b>51,006</b>	<b>255,397</b>

7-Day Positivity Rates				
	County Tests Completed	County %	State Tests Completed	State %
<b>Today</b>	<b>392,828 (+1,320)</b>	<b>9.24%</b>	<b>5,611,691 (+38,928)</b>	<b>7.42%</b>
27-Dec	+1,418	9.12%	+26,728	7.48%
26-Dec	+2,071	9.01%	+38,087	7.10%
25-Dec	+2,061	9.05%	+42,080	7.11%
24-Dec	+2,064	8.94%	+45,869	7.12%
23-Dec	+2,418	9.00%	+39,810	7.36%
22-Dec	+2,189	9.17%	+55,698	7.47%

Cases per 100K Persons			Infection Rates		
	County Cases per 100K	State Cases per 100K		County Infection Rate	State Infection Rate
<b>Today</b>	<b>42.79</b>	<b>38.73</b>	<b>27-Dec</b>	<b>0.94</b>	<b>0.95</b>
27-Dec	43.75	39.43	26-Dec	0.94	0.95
26-Dec	43.96	39.24	25-Dec	0.94	0.95
25-Dec	44.68	39.57	24-Dec	0.94	0.95
24-Dec	43.11	38.03	23-Dec	0.94	0.95
23-Dec	43.58	37.89	22-Dec	0.94	0.95
22-Dec	46.52	38.07	21-Dec	0.95	0.95
			<b>14-Day Weighted Average</b>	<b>0.95</b>	<b>0.95</b>

Key	
<b>Cases</b>	<i>Represents the daily number of new positive cases.</i>
<b>Positivity Rate</b>	<i>The 7-day positivity rate is a rolling weekly average of the percent of new cases relative to the number of tests conducted. The goal is a positivity rate consistently below 5%.</i>
<b>Cases per 100K persons</b>	<i>Measures how widespread the virus is in a community. The goal is to have fewer than 5 new cases per 100K persons.</i>
<b>Infection rate</b>	<i>Shows how many people are infected by each positive case. The goal is an infection rate at or below 0.9.</i>
<b>Data sources:</b> Except for the infection rate, all data provided here is from the State of Maryland's COVID dashboard. The infection rate is tracked by <a href="http://www.covidactnow.org">www.covidactnow.org</a> . It is subject to adjustments and may have a 1 to 3-day lag time in reporting.	

**Prince George's County Metrics**

Key Metrics	Current status*	Goal
Positivity rate	<b>9.24</b>	Remain below 5%
Cases per 100K	<b>42.79</b>	New cases below 5 per 100K (low risk)
Infection rate	<b>0.94</b>	Low risk range (<0.9)

(\* ) Green represents a decrease in these figures. Red represents an increase and black signifies no change.

**Maryland Hospitalizations**

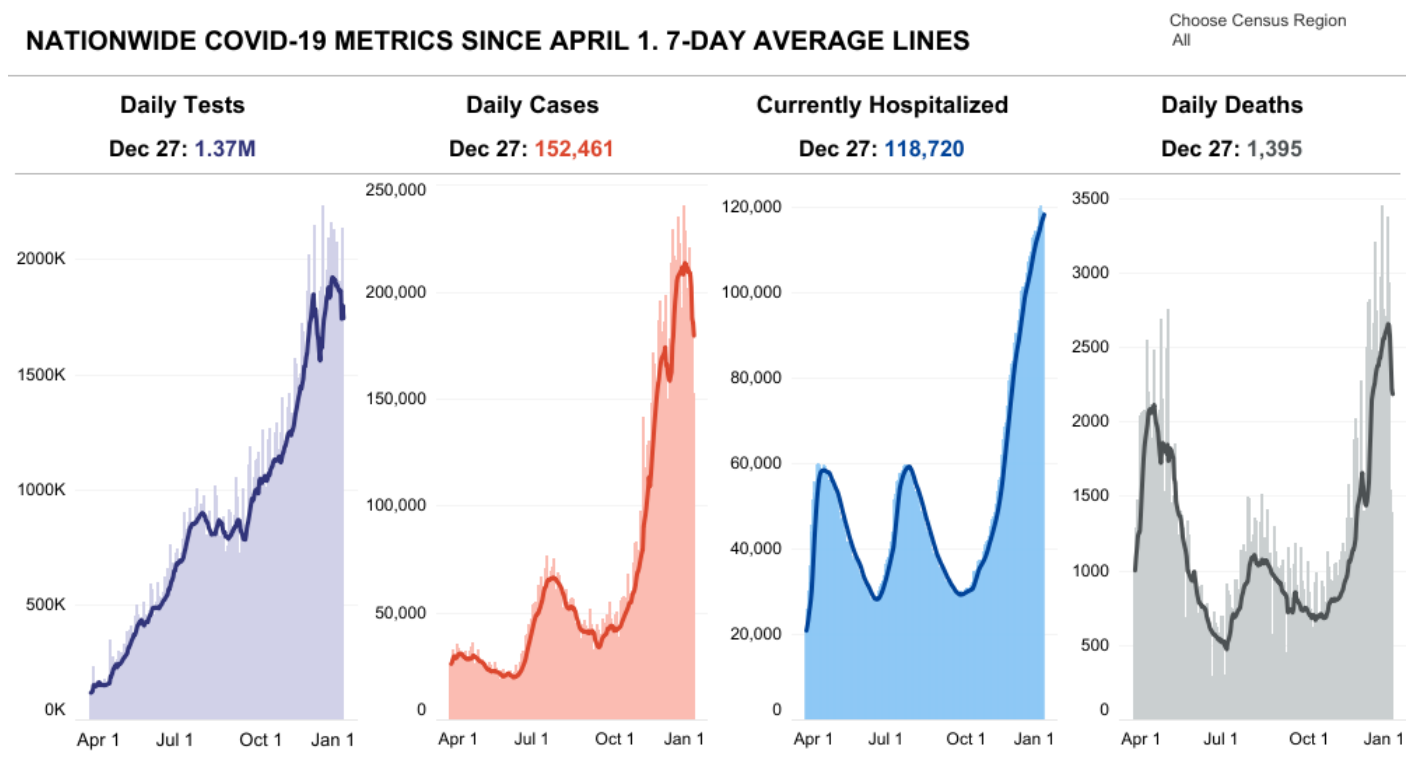
# Hospitalization Data Tracker

Currently Hospitalized:	1,738	-1.2%*
Acute Care:	1,315	-1.4%*
Intensive Care	423	-0.7%*
Ever Hospitalized	26,078	9.6%

(\*Additional Cases Since Thursday, December 24<sup>th</sup>)

## A Look at Nationwide Metrics

The graphic below provides a nationwide look at four key metrics - new tests, new confirmed cases, hospitalizations, and new deaths.



## Questions on Vaccine Distribution?

The Maryland Department of Health and the Prince George's County Health Department are currently leading the distribution process of COVID-19 vaccines. As of December 23, the Maryland Department of Health will be reporting the number of COVID-19 Vaccinations distributed in the State of Maryland. You can view the current vaccination phase, number of vaccinations administered, percent of population vaccinated and more at the bottom of the [Maryland COVID data dashboard](#).

Visit the Maryland Department of Health and the Prince George's County Health Department websites for

information and answers to frequently asked questions on the current vaccination plan and planned timings for each phase and priority group.

[Prince George's County vaccination page](#)  
[Maryland Department of Health vaccination page](#)

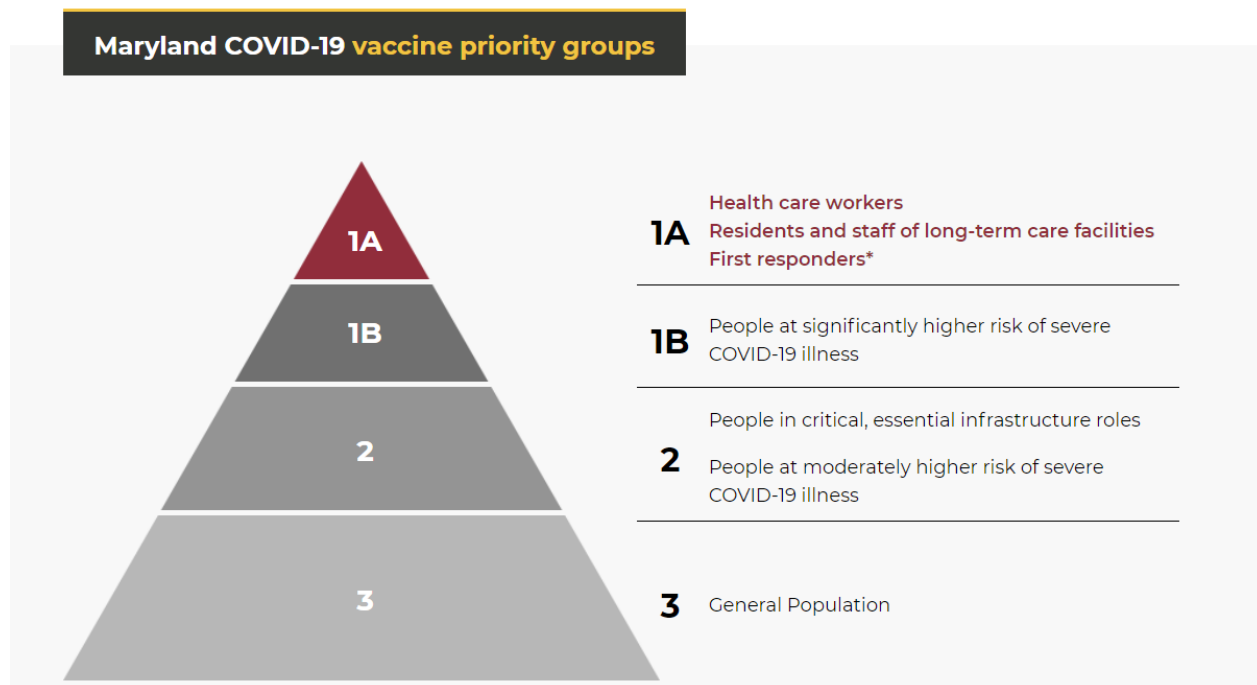
### Vaccine Update

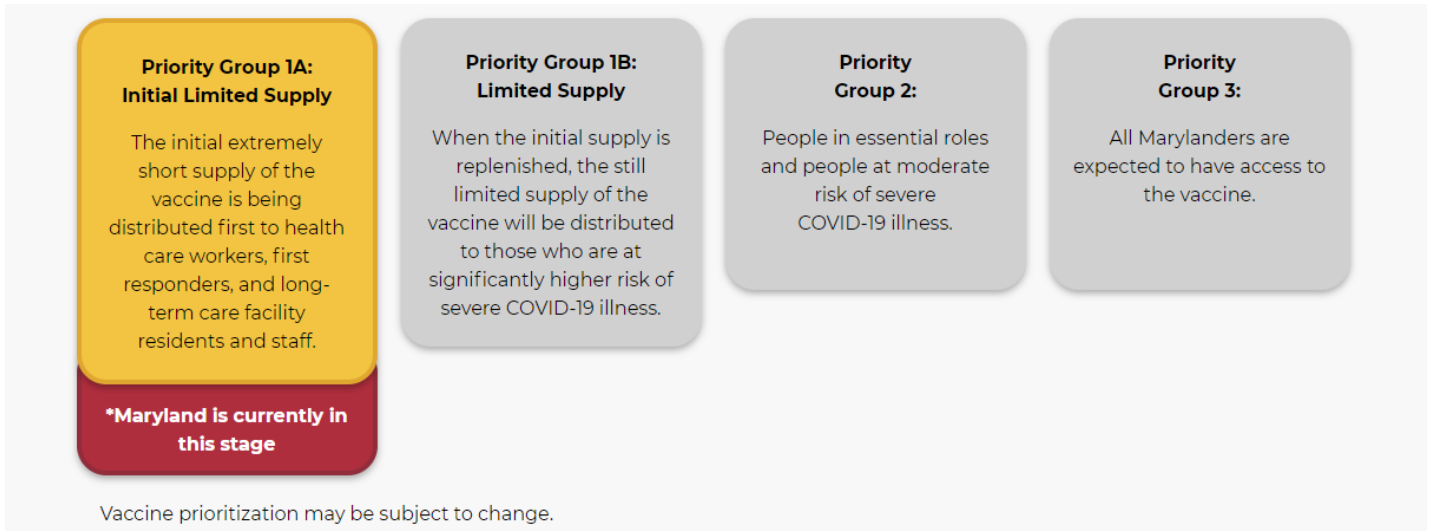
Vaccines	Status	Dosing	Efficacy	Potential Side Effects	Initial Doses Available in Phase 1A
Pfizer	Vaccine has been authorized for emergency use	Two doses, delivered three weeks apart	95% effective at preventing serious illness	Injection-site pain, fatigue, headaches, chills	50,700
Moderna	Vaccine has been authorized for emergency use	Two doses, delivered four weeks apart	94.1% effective at preventing serious illness	Injection-site pain, fatigue, muscle aches, joint pain, headaches, chills	104,300
AstraZeneca	Vaccine trials are ongoing	Two doses, delivered four weeks apart NOTE: A half-dose may be recommended for the first dose.	-	Fever, muscle ache, headache, injection-site pain	-

### Maryland Department of Health Unveils COVID Vaccine Information Page

The Maryland Department of Health has unveiled a new covidLINK vaccine resource [webpage](#) to learn more about the state’s distribution plan, review safety information about the vaccines, and get answers to frequently asked questions.

Based on the Maryland Vaccination Plan, vaccines will be distributed in the state according to the information provided in the graphic below.





(Source: Maryland Department of Health)

### Prince George's County Creates New COVID-19 Vaccine Webpage

Learn about the COVID-19 vaccine, why it is safe, and how it will be distributed by visiting <http://health.mypgc.us/COVIDVaccine>. This page will be updated regularly as the vaccine becomes more widely available.

### [COVID-19 Vaccine FAQ](#)

### COVID-19 Vaccine Benefits and What to Expect after Vaccination

Vaccines help the body develop natural protection against the virus by triggering an antibody response to the virus. The Pfizer vaccine and the various vaccine candidates awaiting approval are not live vaccines, which means they will not cause recipients to become infected with the virus. Vaccinations protect the recipient and will help to prevent the spread of the disease.

The CDC has published an article, [What to Expect after Getting a COVID-19 Vaccine](#), highlighting key facts with a list of common side effects and helpful tips.

The agency has also published the following COVID-19 updates:

- [Post Vaccine Considerations for Residents](#)
- [View the CDC's Facts on COVID Vaccination](#)
- [Frequently Asked Questions about COVID-19 Vaccination](#)

### Realtime Capacity Information Now Available for Metrobus and Metrorail

Metrobus customers can now see how full a bus or rail car is before it arrives, providing travelers with more information to decide when and how to travel. Customers can find this real time information when tracking buses at [buseata.wmata.com](https://buseata.wmata.com), and in the open data feed for third-party transit and mapping applications like Google Maps.

When accessing the data, customers will see a bus or train's capacity in one of the following categories:

- Many seats available: Bus less than 25% occupied, Rail car less than 20% occupied.
- Few seats available: Bus 25 - 49% occupied, Rail car 20%-32% occupied.
- Full: Bus is occupied 50% or greater, Rail car is occupied 33% or greater.

## Other News

### Upcoming Meetings & Events



#### [A very special holiday message from the City of Bowie \(YouTube Video\)](#)

- 1/1 – New Year’s Day holiday – City offices closed. No trash collection. Recycling collection will take place for those on the Friday schedule
- 1/4 – City Council Meeting

#### **Electronics Recycling Event**

The Public Works Department has scheduled an electronics recycling event at the Public Works Solid Waste/Recycling Building Parking Lot located at 16350 Annapolis Road, Bowie, MD on Saturday, January 30, 2021 from 8am-2pm. Residents can bring their electronics for recycling at no charge (below is a list of acceptable items). In addition, the Contractor will also provide on-site hard drive destruction at a cost of \$10 each that can be paid directly to the Contractor. Please email Carissa Sullivan at [csullivan@cityofbowie.org](mailto:csullivan@cityofbowie.org) or call at 301-809-2344 with any questions.

Answering Machines  
Batteries (all types)  
Cables/Wire  
Camcorders  
CDs/DVDs  
Cell Phones  
CD Players  
Computer Equipment  
Computers  
Copiers

Cords  
Duplicators  
DVD Players  
Electronic Typewriters  
Electronic Games  
Fax Machines  
Keyboards/Mice  
Projectors  
Ink/Toner  
Lab Equipment

Laptops  
Laptop Batteries  
Mainframe Equipment  
Media  
Microwave Ovens  
Modems  
Monitors  
Networking  
Equipment  
Pagers

PDA's  
Printers  
Circuit Boards  
Remote Controls  
Scanners  
Hard Drives  
Stereos

Tapes  
Tape Players  
Telephones  
Telecom Equipment  
Televisions  
Testing Equipment  
Toasters

Two-Way Radios  
UPS -Power Supplies  
VCRs  
Word Processors  
Scrap Metals

**FREE**

# Electronics Recycling Event

Saturday, January 30  
8 a.m. - 2 p.m.

Public Works Recycling Building Parking Lot  
16350 Annapolis Road

<b>Batteries (all types)</b>	<b>Laptops</b>
<b>Cables/Wire/Cords</b>	<b>Microwave</b>
<b>CDs/DVDs</b>	<b>Ovens</b>
<b>CD/DVD Players</b>	<b>Monitors</b>
<b>Cell Phones</b>	<b>Printers</b>
<b>Computer Equipment</b>	<b>Scanners</b>
<b>Copiers</b>	<b>Scrap Metals</b>
<b>Hard Drives</b>	<b>Televisions</b>
<b>Ink/Toner</b>	<b>Toasters</b>
<b>Laptops</b>	<b>...and more!</b>

On-site hard drive destruction also available - \$10 per drive.

Questions? [csullivan@cityofbowie.org](mailto:csullivan@cityofbowie.org) or 301-809-2339

## MLK Art Contest Deadline is Fast Approaching

The City of Bowie is hosting its annual Martin Luther King, Jr. Art Contest to promote understanding about the lasting legacy of Dr. King. The theme for this year's contest is *"Joining Hands for Justice"*. There are three different categories within the contest, depending on the grade level of the students. The contest is open to students who live within the municipal limits of Bowie (including home schooled students) or students who attend an eligible school in Bowie. **Be sure to get those entries in soon. The deadline is fast approaching. Entries are due January 4, 2021.** Cash prizes are awarded to winners in each category. Visit <http://www.cityofbowie.org/MLK> for contest details or contact Lori Cunningham at [lcunningham@cityofbowie.org](mailto:lcunningham@cityofbowie.org) or 240-544-5601.

CITY OF BOWIE  
**MLK**  
*ART*  
**Contest**

Theme: *"Joining Hands for Justice"*

**SUBMISSIONS DUE JAN 4, 2021 @ 5 P.M.**

To honor the legacy of Dr. Martin Luther King, Jr. and raise awareness about his accomplishments, the City of Bowie Diversity Committee sponsors an annual art contest for Bowie students\*.

The contest divides the participating grades into three groups:

- Grades K-2 - coloring contest
- Grades 3-5 - poster contest
- Grades 6-12 - video contest

Visit [www.cityofbowie.org/mlk](http://www.cityofbowie.org/mlk) for contest rules, applications, and more information.

Info: [lcunningham@cityofbowie.org](mailto:lcunningham@cityofbowie.org) or 240-544-5601

Must reside in the City of Bowie or attend an eligible Bowie school to participate

