



# COVID-19 NUMBERS

## Daily COVID-19 Update for Wednesday, October 20, 2021

Zip code level vaccination data shows that show very minor increases in vaccination rates for residents of the four Bowie zip codes.

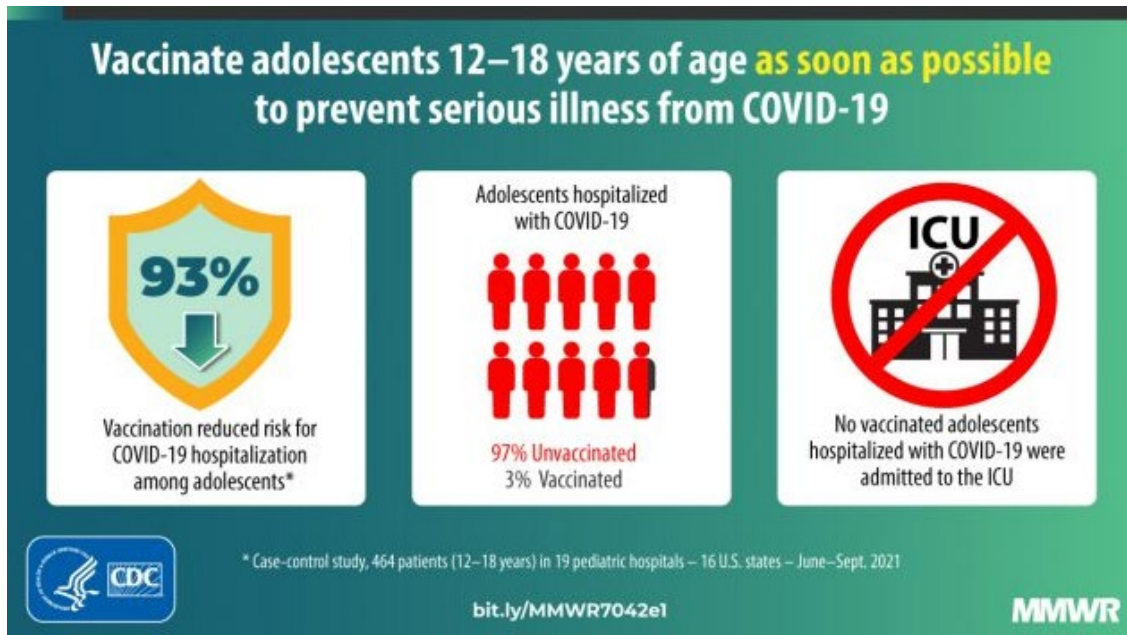
Covid-19 Data (as of 10/20/21)				
	Maryland	PG County	Bowie	
Cases	552,524 (+717)	98,991 (+79)	<b>Cases: 8,627 (+17)</b>	
Deaths	10,757 (+22)	1,712 (+4)		
Positivity Rate	3.36%	2.97%		
Case Rate Per 100K	14.11	9.91	20715: 1,928 (+4)	
<b>Maryland Hospitalizations</b>			20716: 1,890 (+1)	
Adult	Total: 682 (-2.9%)	ICU: 182 (+0.5%)	20720: 2,164 (+7)	
Pediatric	Total: 10 (+11.1%)	ICU: 5 (+66.6%)	20721: 2,645 (+5)	
<i>Figures above in parentheses are daily increases since 10/19/21</i>				
Vaccine Progress				
	20715	20716	20720	20721
Fully Vax	17,140 (64.03%)	13,711 (62.09%)	15,851 (67.45%)	19,297 (64.73%)
1st Dose	18,381 (68.67%)	14,843 (67.21%)	17,221 (73.27%)	21,103 (70.79%)
Vaccine totals represent total population, not eligible population. Source: Maryland Department of Health at coronavirus.maryland.gov				

### Another Reason to Get Vaccinated

The CDC is reporting that unvaccinated people are more than 11 times more likely to die of COVID-19. As of October 12, the majority of breakthrough COVID-19 cases that resulted in hospitalization or death were in elderly people.

### Vaccine Study Shows Importance of Vaccines for Teens

According to a CDC study, two doses of the Pfizer vaccine were [93% effective at preventing COVID-19 hospitalizations](#) in teens from June to September.



*Vaccine effectiveness in US 12- to 18-year-olds*  
(Source: CDC)

**Prince George’s County Vaccination Information**

Visit [mypgc.us/COVIDvaccine](https://mypgc.us/COVIDvaccine) for more information about COVID-19 vaccinations, locations and hours of operation for vaccine clinics operated by the County and other public and private organizations.