



*Classes Announced
for March & April*

Spring Learn-to-Skate Classes

SEE YOU ON THE ICE!

THURSDAY CLASSES

4:30-5:00 PM	TOTS AND PRE-ALPHA
5:00-5:30 PM	PRE-ALPHA AND ALPHA/BETA
5:30-6:00 PM	FREESTYLE, GAMMA/DELTA AND ADULTS
6:00-6:45 PM	SYNCHRO TEAMS



SATURDAY CLASSES

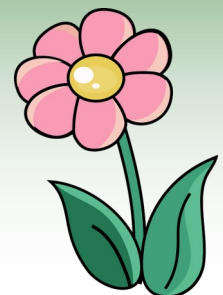
9:30-10:00 AM	POWER SKATING
10:00-10:30 AM	FREESTYLE AND GAMMA/DELTA
10:45-11:15 AM	TOTS AND PRE-ALPHA
11:15-11:45 AM	PRE-ALPHA, ALPHA/BETA & ADULTS
12:00-12:45 PM	PRODUCTION TEAM

CLASS DATES: MARCH 11-APRIL 24

- * 7 - 30 MINUTE LESSONS (WITH RENTALS)
- * 7 PUBLIC SESSION ADMISSIONS
- * \$105 RES/\$110 NON-RESIDENT



Space is limited due to capacity restrictions. COVID guidelines and protocols are in place to keep everyone safe. Masks are required at all times and coaches will follow distancing guidelines during classes. Rental skates and limited toys, props and walkers will be used and will be sanitized following each use. All visitors are expected to follow distancing guidelines.



Bowie Ice Arena

301-809-3090

www.cityofbowie.org

LEARN-TO-SKATE POLICIES AND PROCEDURES - BOWIE ICE ARENA

Register by calling 301-809-3090 February 25-March 8. If you are on site for a scheduled session, you may register in person. Register early to avoid getting closed out of the desired class. Strict capacity limits are in effect.

In addition to posted signage the following procedures will be used for LTS classes.

- All patrons will enter through the main entrance doors and exit the side “hockey” doors after their class.
- Temperature checks and waivers are required for all patrons entering the facility. Anyone not feeling well is asked to stay home. Anyone with a temperature of 100.4 or higher will not be permitted in the facility.
- Rental skates are available but there is a modified procedure that all patrons are asked to follow.
- Parents are asked to pick rental skates up at the skate counter. Staff will not be holding shoes or storing belongings behind the counter. A barrier has been installed at the counter to protect patrons and staff.
- Patrons will put skates on in the lobby while following social distancing and mask guidelines.
- Patrons will then move all belongings to the rink area prior to entering the ice for classes.
- Skaters will be greeted by their instructor and they will help ensure skaters are following all signage on and off the ice to help ensure policies are being followed and masks are being worn properly.
- At the end of class, skaters should exit the ice and retrieve their belongings. Visitors are asked to leave the facility within 10 minutes.
- Rental skates should be left on the cart outside the office (please do not return them to the rental counter). Staff will collect the rental skates and disinfectant them. This will help prevent skaters and parents from re-entering the lobby area and disturbing the flow of traffic coming in.
- All skaters, spectators, instructors, and staff must wear masks properly at all times. Visitors not following guidelines will be asked to leave the facility.
- Gloves and long pants are required to be worn by all students and helmets are recommended for beginner skaters (bicycle helmets work great).
- Classes will be limited in size per City, County and State guidelines and may be adjusted as guidelines change.
- Staff will disinfect after each class. All patrons are asked to wash their hands or use the provided hand sanitizer frequently. Please note that frequently used doors are propped open to help eliminate the need to touch door handles and push bars.
- A parent must accompany a minor child into the facility but are asked to limit the number of additional family members brought to the rink.
- Signage for class locations on the ice will be posted and will allow for proper distancing.
- Instructors will not pick up the children. Instructors will maintain distance while teaching the classes. Again, masks are required at all times for everyone.
- Walkers or skating aides may be used to assist beginner skaters as needed and will be disinfected after each use.

Tot 1-4 classes will only be offered once per day to allow for sufficient cleaning of toys and props used during these classes. Tall & Small (parent assisted class) will not be offered at this time. Private lessons can be arranged for this age/level by contacting the Skating Director at cbrinton@cityofbowie.org or calling the arena at 301-809-3090.