



City of Bowie

15901 Excalibur Road
Bowie, Maryland 20716

March 23, 2021

NOTICE OF VIRTUAL STAKEHOLDERS MEETING

Detailed Site Plan #DSP-19021

Proposal: Construction of 902,064 Sq. Ft. of Retail, Commercial and Office Space

Site Area: 59.83 Acres

Current Zoning: E-I-A (Employment and Institutional Area)

Location: U.S. Route 301 (Southbound), Approximately 0.5 Mile South of MD Route 214

Applicant: South Lake Partners, LLC

Dear Business Owner, Resident, or Interested Party:

South Lake Partners, LLC has submitted an application for a Detailed Site Plan for the purpose of constructing 902,064 sq. ft. of retail/commercial/office space on 59.83 acres. The site of the proposed development is located on U.S. Route 301 (southbound), approximately 0.5 mile south of MD Route 214, and is zoned E-I-A (Employment and Institutional Area), where the proposed uses are permitted by right under the Prince George's County Zoning Ordinance.

The City has established the following schedule for a Stakeholders Meeting for this application:

STAKEHOLDERS MEETING: Tuesday, April 6, 2021 at 7:00 p.m.

This meeting will be virtual. Attendees at the Stakeholders Meeting may join in by using the following link: <http://bowie.fyi/stakeholdersmtg4-6>, participate using the "Listen Only" mode, and ask questions through the chat function.

Dates for the Bowie Advisory Planning Board (BAPB) and City Council virtual public hearings for this application have not yet been determined. You will receive another notice when those dates have been established.

Sincerely,

Frank Stevens, AICP
Department of Planning and
Economic Development

Attachment (over)

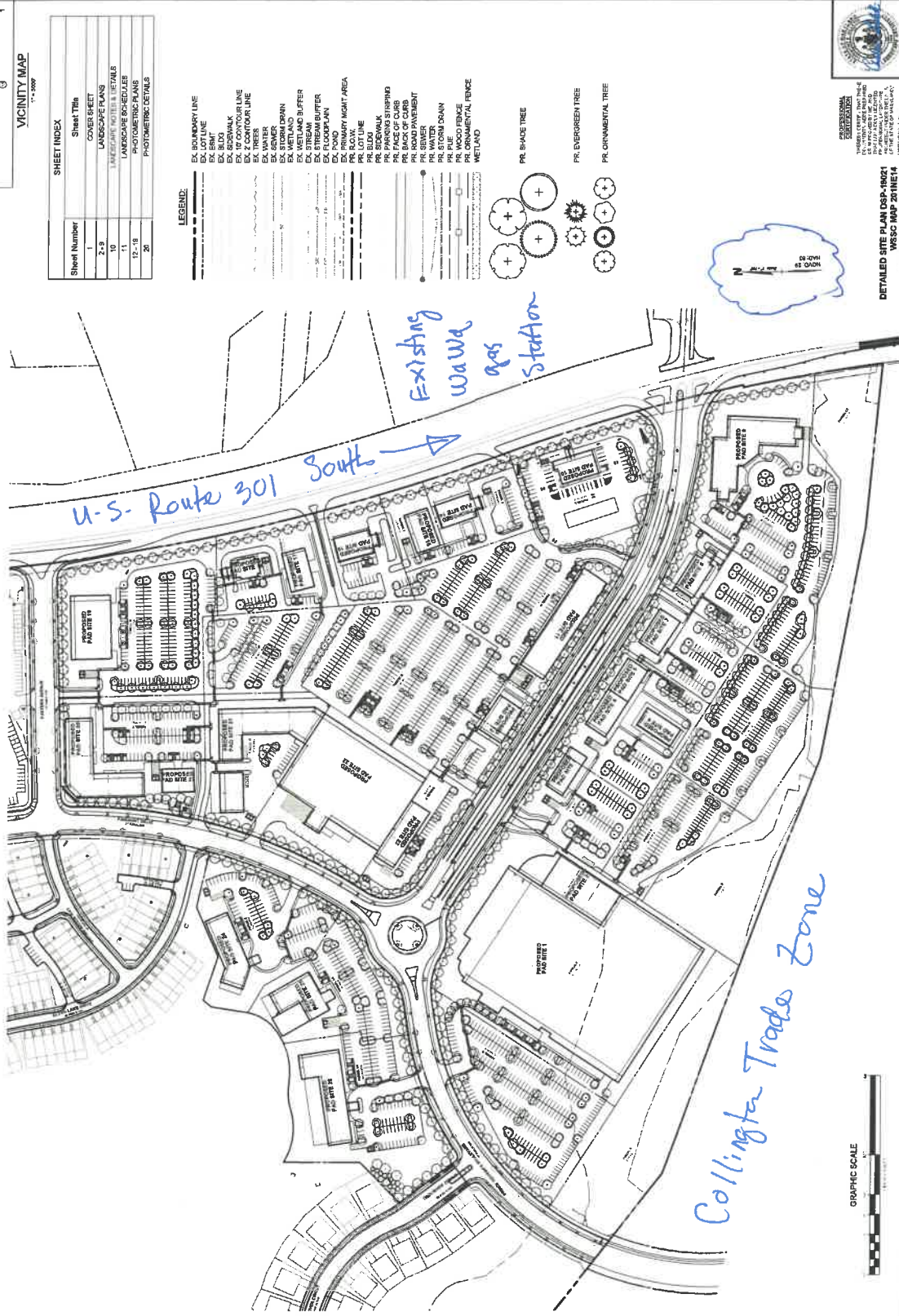
t:/stakeholdersmeetingnotice.doc

LANDSCAPE & LIGHTING PLAN FOR DSP-19021

SOUTH LAKE - COMMERCIAL PHASE I

7th ELECTION DISTRICT - QUEEN ANNE
PRINCE GEORGE'S COUNTY, MARYLAND

PRELIMINARY NOT FOR CONSTRUCTION



APPROVED

Jonathan Mayers
Professional Engineer
License No. 11773
State of Maryland

DETAILED SITE PLAN DSP-19021
TAX MAP 70, GRID D3 & D4
LANDSCAPE & LIGHTING PLAN FOR DSP-19021
COVER SHEET

DATE: 08/2019
DATE: 08/2019

NO.	DATE	BY	FOR
1	08/2019	JM	FOR APPROVAL
2	08/2019	JM	FOR APPROVAL
3	08/2019	JM	FOR APPROVAL
4	08/2019	JM	FOR APPROVAL
5	08/2019	JM	FOR APPROVAL
6	08/2019	JM	FOR APPROVAL
7	08/2019	JM	FOR APPROVAL
8	08/2019	JM	FOR APPROVAL
9	08/2019	JM	FOR APPROVAL
10	08/2019	JM	FOR APPROVAL
11	08/2019	JM	FOR APPROVAL
12	08/2019	JM	FOR APPROVAL
13	08/2019	JM	FOR APPROVAL
14	08/2019	JM	FOR APPROVAL
15	08/2019	JM	FOR APPROVAL
16	08/2019	JM	FOR APPROVAL
17	08/2019	JM	FOR APPROVAL
18	08/2019	JM	FOR APPROVAL
19	08/2019	JM	FOR APPROVAL
20	08/2019	JM	FOR APPROVAL

RODGERS CONSULTING
1831 Woodland Ave. Suite 201, North Potomac, MD 20894
PH: 301.360.8700 | FX: 301.360.8700 | www.rodgers.com

SOUTH LAKE - COMMERCIAL PHASE I
TAX MAP 70, GRID D3 & D4
LANDSCAPE & LIGHTING PLAN FOR DSP-19021
7th ELECTION DISTRICT - QUEEN ANNE
PRINCE GEORGE'S COUNTY, MARYLAND

APPLICANT:
South Lake Partners, LLC
c/o Jonathan Mayers
Professional Engineer
1831 Woodland Ave., Suite 201, North Potomac, MD 20894
PH: 301.360.8700 | FX: 301.360.8700 | www.rodgers.com

GRAPHIC SCALE:
1" = 10'-0"

CALL "MISS UTILITY" AT 800-527-8777
5 Bann Stone Road St. Conover, NC

REVISION	DATE	REASON