

The Bowie Heritage Trail Newsletter

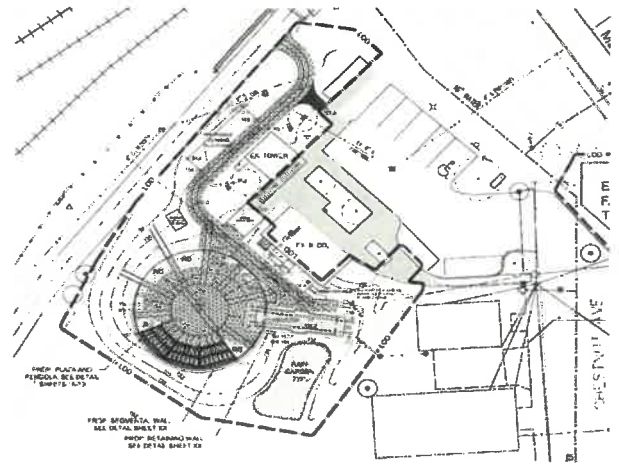


PHASE 1 TRAIL CONSTRUCTION READY TO START

Construction activities related to Phase 1 of The Bowie Heritage Trail have begun. Phase 1 will follow the vacant right-of-way of Railroad Avenue, connecting the public parking area on 12th Street to the City's Railroad Museum property and a planned pedestrian underpass of the MD 564 bridge. The trail will go underneath MD 564 to a proposed new City park at the western end of 10th Street. Construction of the trail, a new retaining wall under the MD 564 bridge and protective fencing along the railroad should start this fall.

RAILROAD MUSEUM EXPANSION FUNDING DEFERRED

Design plans have been completed for substantial new improvements adjacent to The Bowie Heritage Trail at the Railroad Museum property, located at 8614 Chestnut Avenue. The work includes relocation of the caboose to make room for a train watching platform, the addition of a brick pathway, pergola and educational plaza behind the depot building, bike racks, benches, artwork and landscaping. Unfortunately, due to budget constraints, the City Council was not able to fund construction this year. If funding is provided next fiscal year, work could start as early as Fall 2019.



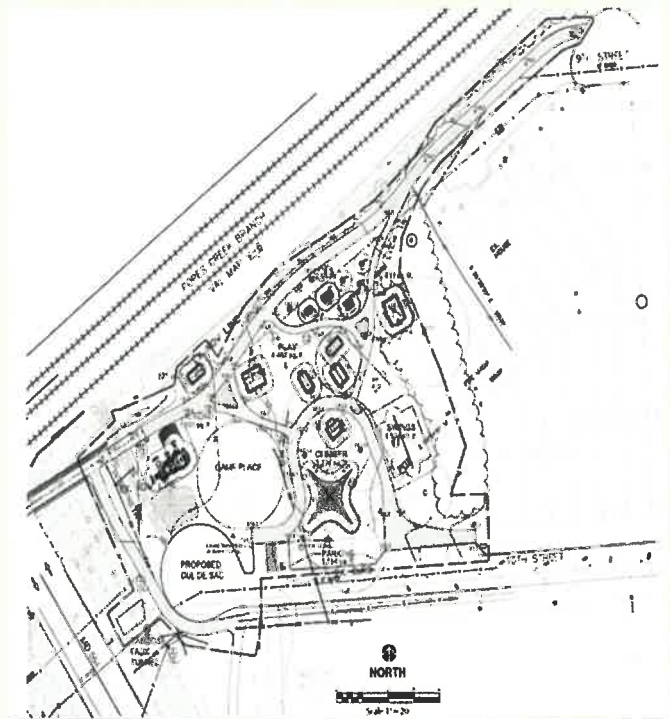
JERICHO PARK TRAIL FUNDING DEFERRED

The City recently completed design plans for a new hiker-biker trail connection between Falling Water Court in the Adnell subdivision and the recreation facilities at the City's Jericho Park on MD 197. This half mile segment of The Bowie Heritage Trail will provide neighborhood access to park amenities and recreational opportunities, and it will establish a new pedestrian connection from Old Town Bowie to the Bowie State University campus and MARC train station. Unfortunately, due to budget constraints, the City Council was not able to fund construction this year. If funding is provided next fiscal year, work could start as early as Fall 2019



10TH STREET PARK FUNDING DEFERRED

Design plans have been completed for a new City park, reflecting Old Town Bowie heritage, at the end of 10th Street. The new neighborhood park and playground will be connected, via a pedestrian underpass of MD 564, with the Railroad Museum. The park will include a railroad-themed playground for children, with a play train, trestle bridge, climber, swings, see-saw and a natural play area. The park also creates a small replica village of homes and businesses, showcasing seven iconic buildings found in Huntington. It will also include an open play area, pet waste station, trail, bike racks, benches and other site furnishings, protective fencing along the railroad, landscaping and several parking spaces. Unfortunately, due to budget constraints, the City Council was not able to fund construction this year. If funding is provided next fiscal year, work could start as early as Fall 2019. The firm of Grace E. Fielder and Associates designed the park and the additional Railroad Museum amenities mentioned in this newsletter.



DESIGN ACTIVITIES CONTINUE FOR NEW BRIDGE OVER PATUXENT RIVER

Design plans for the bridge crossing are 30% complete. The engineering consultants and public agency project management team are moving forward with the next phase of bridge design and environmental permits. The bridge will link the existing WB&A Trail in Prince George's County to the WB&A Trail in Anne Arundel County and close a major gap in the mid-Maryland trail system. Funding for construction has been secured; it is estimated to cost \$5-6 million. The bridge will be a four-span, 520' long structure with a 13' wide clear space for trail users and emergency vehicle access. Bob Patten at the Prince George's County Department of Parks and Recreation is the contact for this project.

WB & A TRAIL BRIDGE Connecting Anne Arundel and Prince George's Counties



Trail river crossing will be located on the Spur Trail about one mile north of the main WB & A Trail.



PREPARED BY THE CITY OF BOWIE'S
PLANNING AND ECONOMIC
DEVELOPMENT DEPARTMENT

Want More Information?

Please feel free to contact us at 301-809-3047 with any comments or questions.