

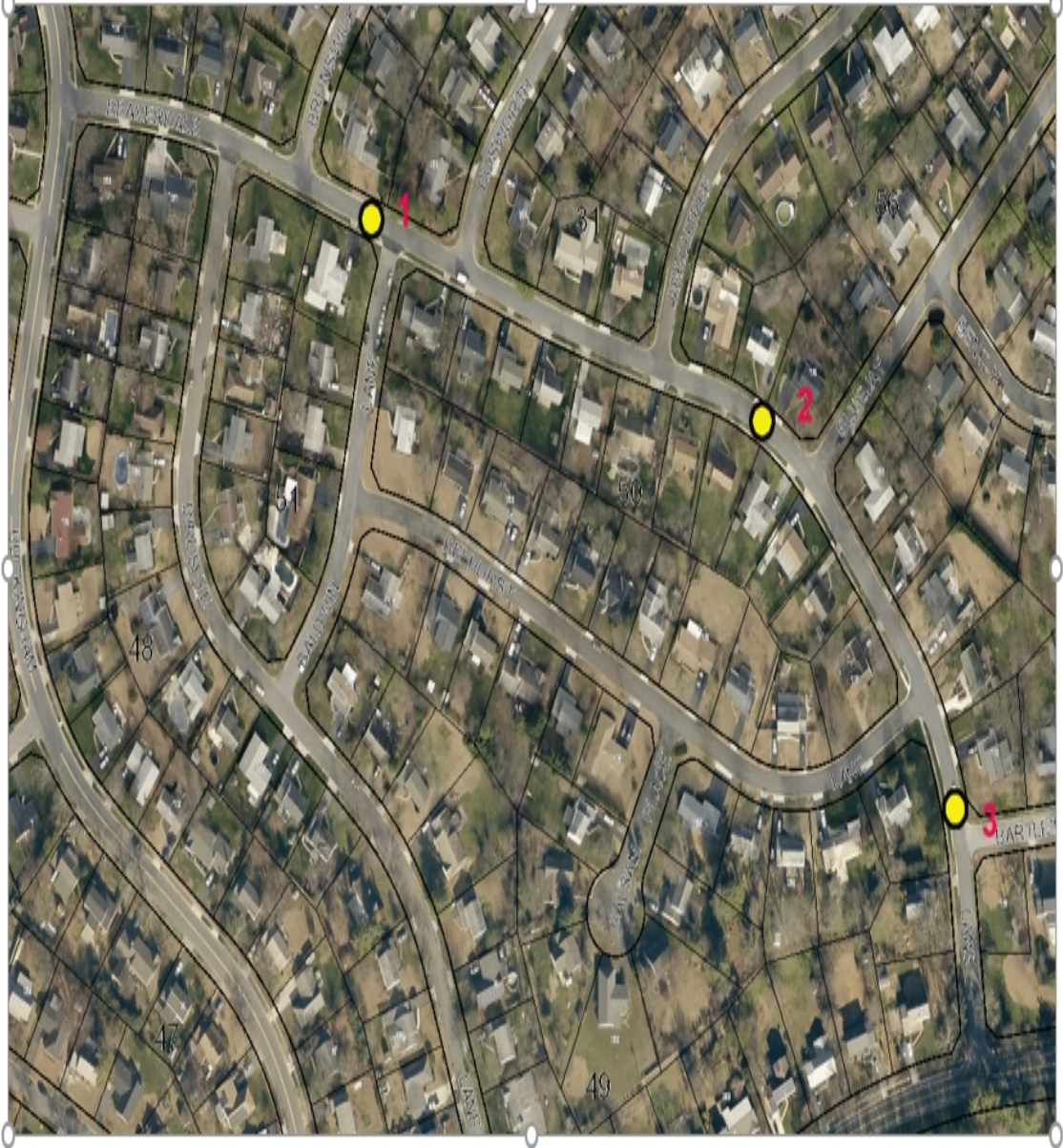
BEAVERDALE LANE TRAFFIC CALMING (NTMP)

Background	<p>Concerns voiced by the residents of Beaverdale Lane regarding excessive traffic and speed prompted DPW to perform Speed/volume studies. The studies are necessary to determine the extent, if any, traffic calming devices are warranted.</p> <p>Utilizing the Council adopted points based Neighborhood Traffic Management Program, it was determined Level II Traffic Calming Devices are warranted. Level II devices include Speed Humps, Speed Cushions and Lane Chokers.</p> <p>Due in part to the street geometrics, Speed Humps are proposed.</p>
Project Scope	<p>The scope of this project is limited to the installation of three (3) Level II traffic devices (Speed Humps) striping and signage. The project is dependent upon the approval of at least 60% (17 property owners) on Beaverdale Lane. The construction would be completed by late spring 2019.</p> <p>A stake holders meeting will be schedule in February or early March too solicit feedback.</p>
Project Manager	<p>Michael F. Schramm Phone: 301.809.2341 email: mschramm@cityofbowie.org</p>
Total Project Cost	<p>\$25,000</p>
Design	<p>DPW Staff M. Schramm</p>
Construction Contractor	<p>DPW - Street Division Contractor to be selected</p>
Anticipated Construction Date	<p>Construction is anticipated to begin in late spring of 2019.</p>

BEVERDALE LANE TRAFFIC CALMING (NTMP)

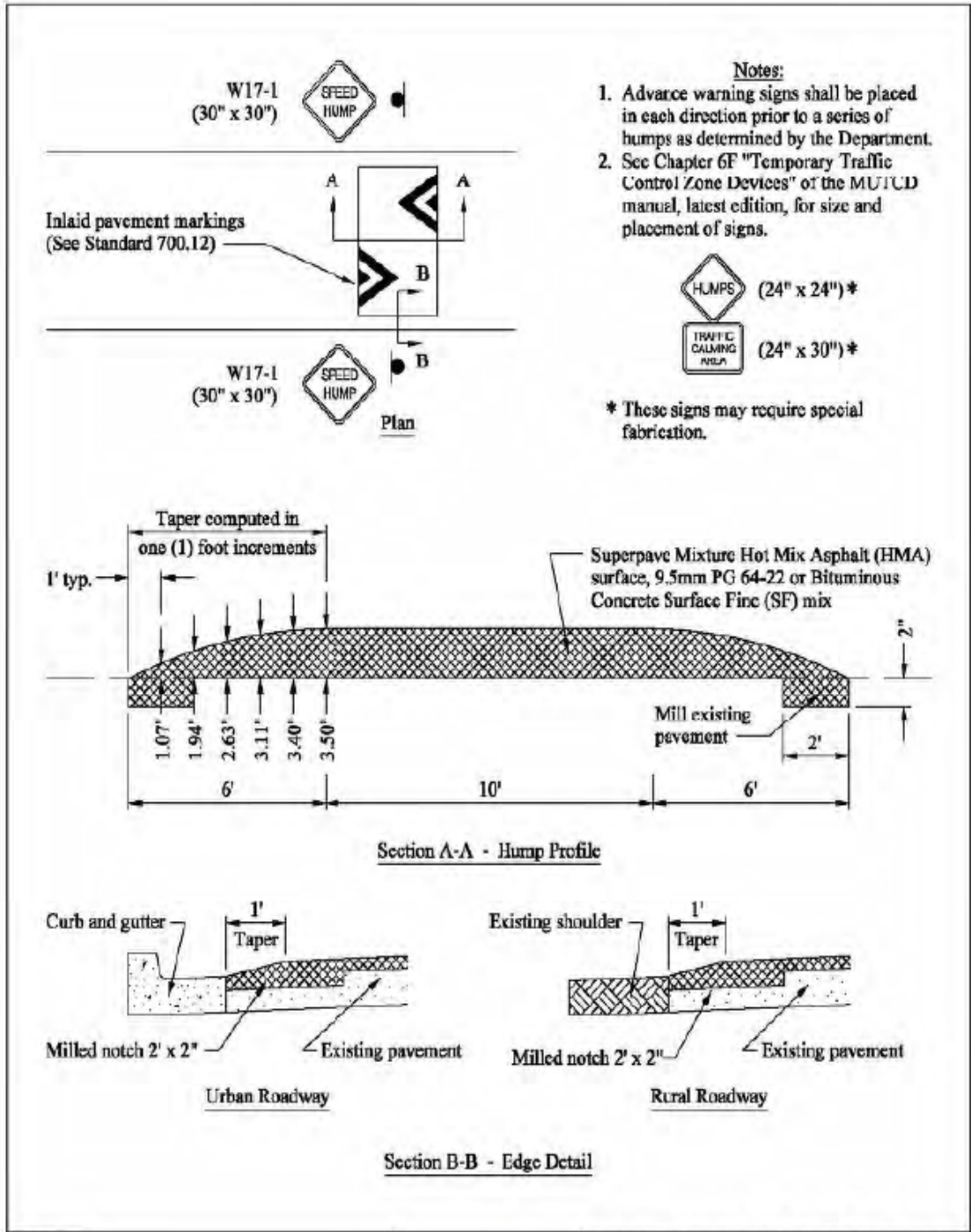
Images /
Attachments

BEVERDALE LANE TRAFFIC CALMING DEVICE LOCATIONS - AERIAL VIEW

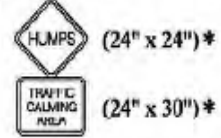


Base map source: PG Atlas.com

BEVERDALE LANE TRAFFIC CALMING (NTMP)



- Notes:**
1. Advance warning signs shall be placed in each direction prior to a series of humps as determined by the Department.
 2. See Chapter 6F "Temporary Traffic Control Zone Devices" of the MUTCD manual, latest edition, for size and placement of signs.



* These signs may require special fabrication.

<p>APPROVED:</p> <p>_____ DIRECTOR</p> <p>_____ DATE</p> <p>_____ REVISION DATE:</p> <p>_____ APPROVED BY:</p>		<p>DEPARTMENT OF PUBLIC WORKS AND TRANSPORTATION Prince George's County, MD</p>
		<p>Speed Hump: Flat Top Profile</p>
		<p>STD. 700.01</p>